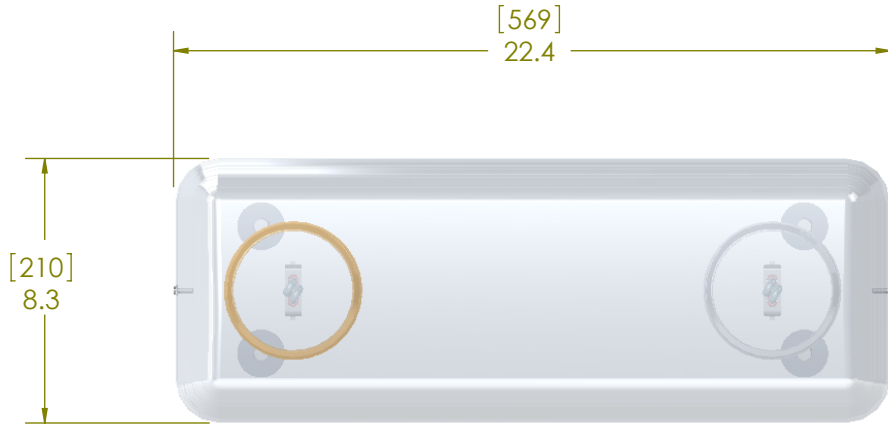


8 7 6 5 4 3 2 1

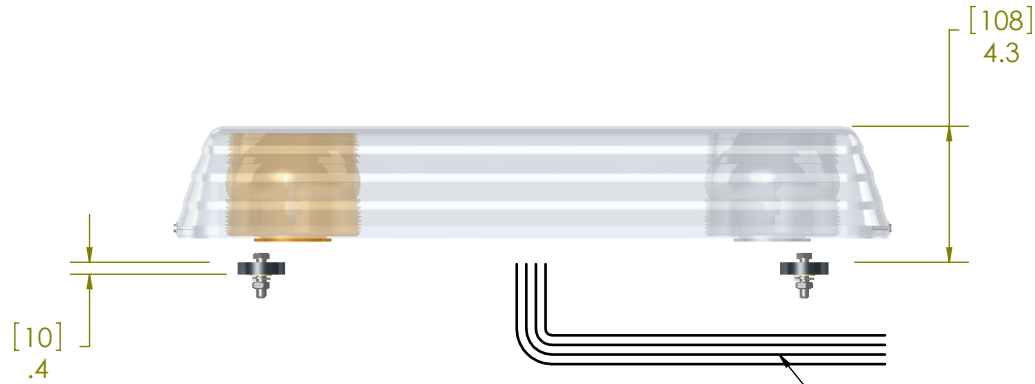
REVISION HISTORY		
REV.	DESCRIPTION	DATE
01	PRELIMINARY RELEASE PER P3 #00012	2003-04-23
A	INITIAL RELEASE PER P3# 00012	2004-06-03
A	INITIAL RELEASE	2010-12-28



TOP VIEW

SPECIFICATIONS

1. CERTIFICATIONS: NONE
2. FLASH MODE:
 - a. DUAL: 140 ± 5 FLASHES PER MINUTE
 - b. QUAD: 130 ± 5 FLASHES PER MINUTE
3. VOLTAGE (NOMINAL): 12 - 24 VDC
4. VOLTAGE (EXTREME): 9.0 – 32.0 VDC
5. CURRENT (NOMINAL): 3.8 A
6. POWER (NOMINAL): 46 W
7. TEMPERATURE RANGE: -22°F (-30°C) TO 122°F (50°C)
8. CONNECTION: 16 AWG WIRES
9. MOUNTING: 4 BOLTS (5/16")
10. BASE MATERIAL: EXTRUDED ALUMINUM
11. LENS MATERIAL: POLYCARBONATE
12. WEIGHT: 7 LBS.



FRONT VIEW

LENS COLORS
 OUTER DOME - CLEAR
 FRESNEL LENS 1 - AMBER
 FRESNEL LENS 2 - CLEAR

WIRES: RED, BLACK, ORANGE, AND GREEN. 18" [762MM], 16 AWG

NOTES:
 1. DIMENSIONS IN INCHES [MILLIMETERS]

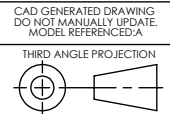
APPROVALS		DATE
DRAWN BY	ADM	
CHECKED		
ELEC. ENG.		
MECH. ENG.		
TEST ENG.		
SALES		

ECCO Electronic Controls Co.
 An Employee Owned Company
 800-635-5900 P.O. BOX 7246, BOISE, ID 83707

LIGHTBAR, EVOLUTION, 22", 6221009

Project:	Date Created: 2003-04-23
SIZE DWG. NO.	6221009
REV.	A
SCALE 1:6	PREPARED PER ASME 14.100M-1998 / ASME Y14.1-1995
SHEET 1 OF 1	

NON DISCLOSURE AGREEMENT
 THIS DRAWING AND THE DESIGN IT DISCLOSES ARE THE PRIVATE PROPERTY OF ECCO AND IS ISSUED IN CONFIDENCE FOR ENGINEERING INFORMATION ONLY. THE DRAWING AND / OR DESIGN MAY NOT BE USED, COPIED, REPRODUCED, OR OTHERWISE DISCLOSED IN PART OR AS A WHOLE TO OUTSIDERS OR USED FOR ANY OTHER PURPOSE WITHOUT THE PRIOR WRITTEN CONSENT OF ECCO. THE DRAWING IS SUBJECT TO RECALL AT ANY TIME. YOUR POSSESSION OF THIS DOCUMENT CONSTITUTES ACCEPTANCE OF THESE TERMS. © 2003 ECCO



8 7 6 5 4 3 2 1